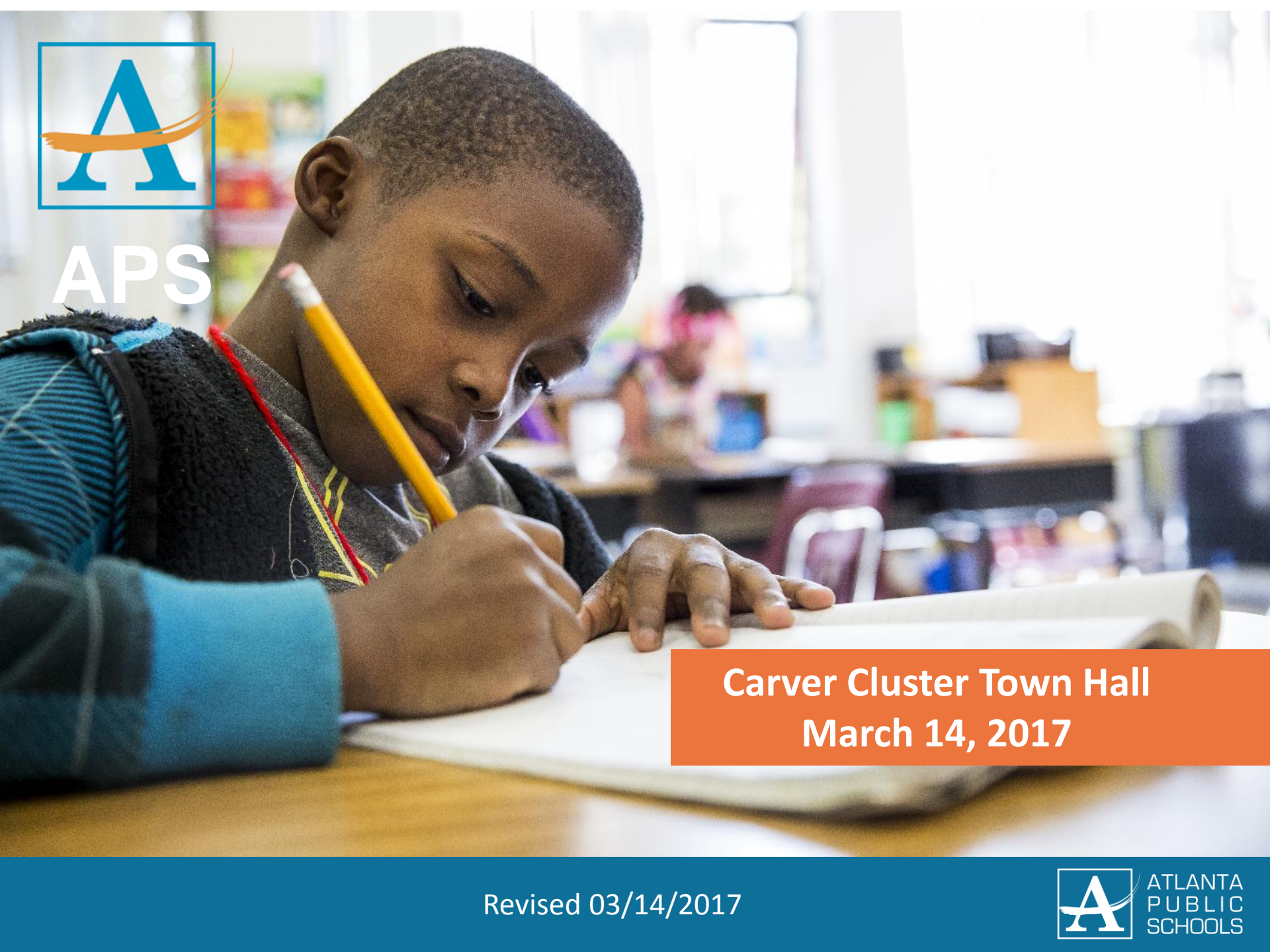




APS



Carver Cluster Town Hall
March 14, 2017

Revised 03/14/2017

Agenda

Welcome & Introductions

Current State of District & Carver Cluster

Updates on Schools within the Cluster

Updates on Partners within the Cluster

Question & Answer

Welcome & Introductions

Carver Cluster Mission:

Through a culture of collaboration, respect and trust, the Carver Cluster will enhance and strengthen its overall academic programs while maintaining a safe and nurturing environment that prepares students for college and careers.



Carver Cluster Vision:

Produce high-performing, college and career ready students that are globally aware and ready to have a positive impact on society

Agenda

Welcome & Introductions

Current State of District & Carver Cluster

Updates on Schools within the Cluster

Updates on Partners within the Cluster

Question & Answer

A young boy with short dark hair is smiling broadly and flexing his fists. He is wearing a red t-shirt with a Superman graphic that includes the text "MAN OF STEEL" and "SUPERMAN". He is standing in a school hallway with a white brick wall. Behind him is a wooden rack with many metal hooks, each holding a backpack or jacket. The backpacks are in various colors, including purple, blue, grey, and pink. The text "APS is" is overlaid on the left side of the image.

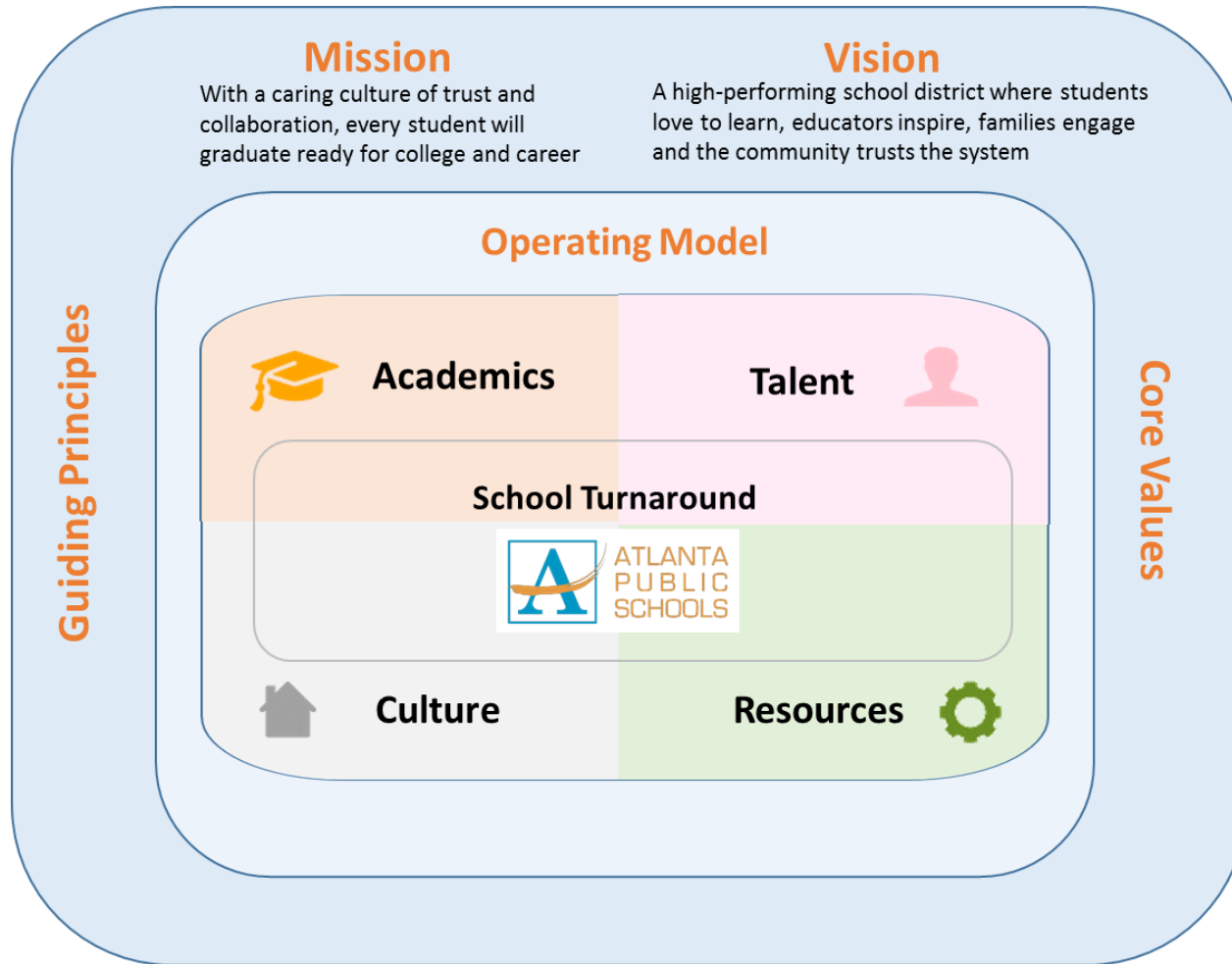
APS is

on a Journey of Transformation

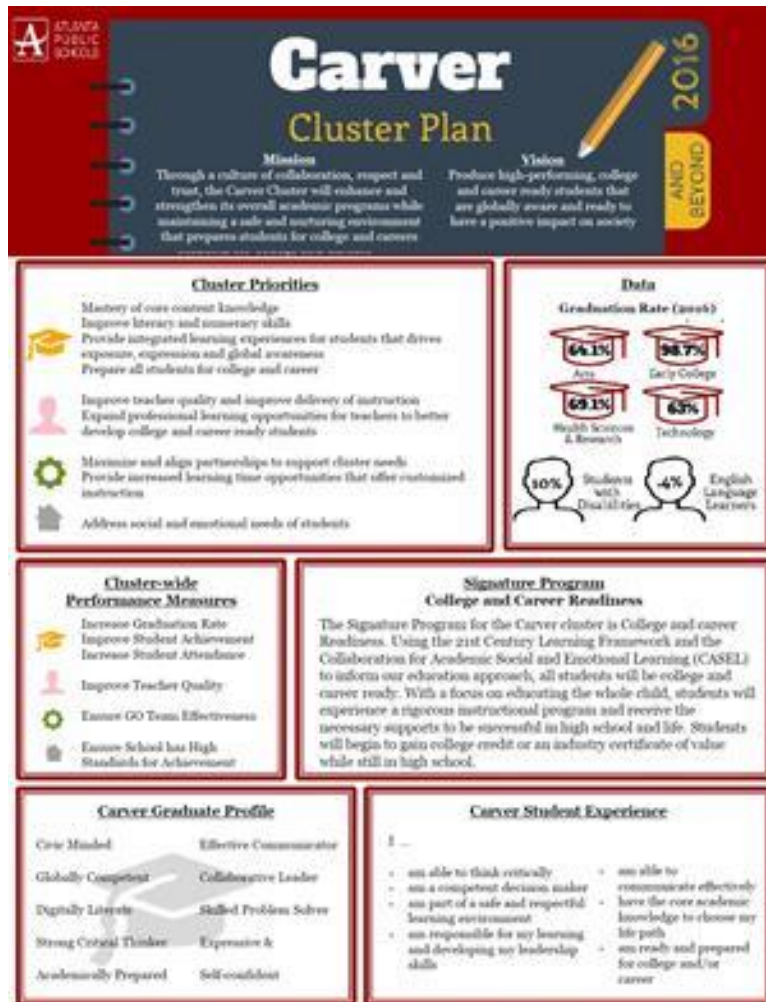
STATE *of the* DISTRICT

We are now in full-scale implementation of our transformational framework. While the organization is stronger structurally, academic performance is mixed.

APS Transformation Framework



Carver Cluster Plan



College and Career Readiness

Using the 21st Century Learning Framework and the Collaboration for Academic Social and Emotional Learning (CASEL) to inform our education approach, all students will be college and career ready. With a focus on educating the whole child, students will experience a rigorous instructional program and receive the necessary supports to be successful in high school and life. Students will begin to gain college credit or an industry certificate of value while still in high school.

Carver Cluster

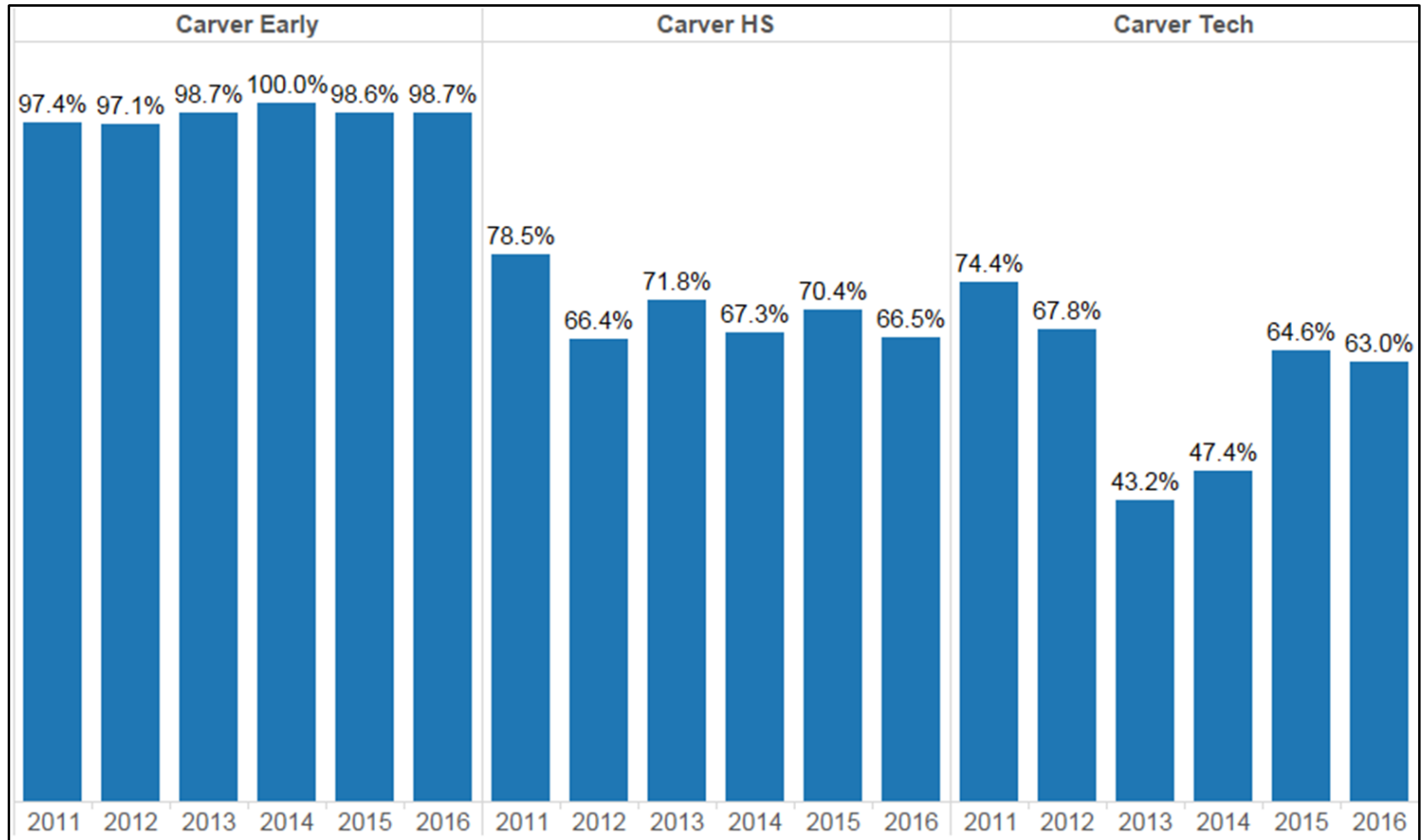
College and Career Signature Program

Program	FY 17	FY18	FY19	FY20	FY21
Finch	Beginning (Planning)	Intermediate (Implementation)		Advanced	College & Career Ready
Perkerson	Beginning (Planning)	Intermediate (Implementation)	Advanced		College & Career Ready
Sylvan Hills MS	Beginning (Planning)		Intermediate (Implementation)	Advanced	College & Career Ready
Carver EC	Advanced				College & Career Ready
Carver HS	Intermediate (Implementation)		Purpose Built Schools		
Price MS	Beginning (Planning)	Purpose Built Schools			
Slater ES	Beginning (Planning)	Purpose Built Schools			
Gideons ES	Beginning (Planning)	Kindezi Schools			
Thomasville ES	Purpose Built Schools				

Carver Cluster Performance - CCRPI

		2014	2015	2016	Grand Total
ES	Finch	48.6	56.9	44.3	49.9
	Gideons	48.2	47.2	51.2	48.9
	Perkerson	41.5	48.1	57.6	49.1
	Slater	45.6	54.8	54.3	51.6
	Thomasville	41.9	41.8	40.3	41.3
MS	Price	58.8	54.3	52.1	55.1
	Sylvan	52.7	60.2	57.8	56.9
HS	Carver Arts	72.1	61.2	51.3	61.5
	Carver Early	94.3	101.7	97.3	97.8
	Carver Health	58.3	61.0	48.2	55.8
	Carver Tech	48.9	43.0	56.5	49.5

Carver Graduation Rates



Agenda

Welcome & Introductions

Current State of District & Carver Cluster

Updates on Schools within the Cluster

Updates on Partners within the Cluster

Question & Answer



Finch Elementary

Finch Updates

Instruction Highlights

Hands on Atlanta High Impact Tutors (K-2)

Hands on Atlanta Discovery Saturdays

Rensselaerville Leadership Supports

Afterschool Title I Tutorial with snacks/dinner

Social and Emotional Learning

Grade level weekly 'Getting Ahead of Instruction' discussions with administrators and instructional coaches

Weekly common formative assessments

Accelerated Reader weekly recognition

Full-time CTAE Instructor, Reading Specialist, Math Specialist, Behavior Specialist



Nutrition

Hands on Atlanta Meals for Kids Program
Fresh Fruit & Vegetables Program

Extra-Curricular Activities

Boys to Men/Elegant Princess Etiquette/
Character Club
Elegant Eagles Dancers

Finch Partners & Grants



PARENT LEADERS
UNITED FOR STUDENTS





Gideons Elementary

Gideons Updates

Pillar of Pittsburgh Community
since 1957

Achievement: Increase in CCRPI
by 4 points; Student Growth
Report indicates students made
gains compared to peers on their
same level; Closed achievement
gap according to CCRPI data

Increased attendance rates;
Decreased suspension rates

School participated in the District
Spelling Bee; Multiplication and
Math Contest; Accelerated
Reading Bowl; Student Lead
Conferences; Black History
Program Competition at Carver
High

Parent Curriculum Nights
Anti-bullying Program
No Place For Hate School

Student Clubs: Kindness Club;
Graces of Gideons;
Boys Bowtie Group; Beta Club

Gideons Partnerships & Supports



Gideons SPLOST 2017 Updates



❑ **Construction Budget** = \$14,200,000

❑ **Project Budget** = \$16,500,000

Includes design, construction, testing, hazmat, FFE & relocation

❑ **Tentative Project Schedule**

Design Start - July 2017

Design Complete - June 2018

Construction Start - July 2018

Construction Complete - July 2019

❑ **Project Scope Overview**

Select renovations and improvements may include but not be limited to the following items:

- Renovated classroom, support and administrative spaces
- Improved identity of main / public entry and bus / carpool entry
- Improved bus, carpool drop-off, pedestrian access and ADA accessibility
- Improved visitor and staff parking
- Improved hardscape and landscape
- Improved monument signage and exterior lighting
- Improved fencing and gates
- Improved Auditorium, Media Center, Cafeteria and Kitchen
- Updated HVAC, electrical and plumbing systems



Perkerson Elementary

Perkerson Updates



ACADEMICS

- **Extended Literacy Focus** with schoolwide Phonics Program, Language, and Writing focus.
- Enhanced **Dual Immersion Program** & World Language focus with field experiences and schoolwide cultural events.
- **Personalized Attention and Supportive Environment** through SEL, art therapy, and garden therapy, nature trail, and young Girls (B.E.L.L.E.S) & Boys (P21) Mentoring Program.
- Focus on Attendance Rates: **Students Incentives for Attendance/Academic Recognition**, Student Celebrations & Award Recognition

Perkerson posted the third greatest gains on the CCRPI in the district with an increase of **9.5 points** after three years of stagnant growth. The school has also been selected as a **GADOE 'Beat the Odds' School**, which means it performed better than statistically expected on the CCRPI against Georgia schools with similar backgrounds.

Perkerson operates the oldest Dual Language Immersion program in the district offering Spanish and English for K-4th Grade for the 2017-2018 school year.

School Improvement Support with Rensselaerville School Turnaround Specialists, Reading/Math Specialists, Instructional Coach and Writing Lab.

Striving Readers Grant to support Literacy Framework and Instructional Support with Paraprofessionals in K-2nd grade classrooms.



Perkerson Partnerships





Slater Elementary

Slater Updates



Instruction Highlights

College and Career Signature Theme
Hands-on STEAM focus for Discovery Saturdays
Thursday 'Thrive' Tutoring Program
(instruction/supper for 50 students in grades 3-5)
Hands on Atlanta volunteers

Student Participation:

Debate Team

Kindness Club (50 members)

- Random Acts of Kindness Week
- 500 Hugs Challenge Day

Student Wellness Ambassadors

GLITZ - Girls in Technology Robotics Team

Drama Club

Girl Scouts

Marathon Kids Running Club

Honors/Awards:

Debate Team

- Excellence in Debate Award
- Top Speakers Award

Helen Ruffin Reading Bowl

- Team placed 14th this year

District winners in Technology Fair

Two teams headed to state competition in Macon, GA

Loews Atlanta Hotel - Cluster Partner of Year Award

Slater Partnerships





Thomasville Heights ES

Thomasville Heights Updates



INSTRUCTION

- Added 32 full-time instructional positions
- Increased enrichment time from 90 min. to 450 min. per week
- Small group instruction in Literacy and Math Centers for 175 students
- Early Learning: Currently one Pre-K class with plans to add second next year. Fifty-two families already enrolled.



PARENT ENGAGEMENT

- Formed PTA for first time in recent memory (30 members)
- Attendance at Parent-Teacher Conferences rose from 10 families in Oct. to 64 in Feb.
- 211 families have attended at least one parent/school event (2/3 of our enrollment)
- 18 families have attended more than five events this year



SCHOOL CULTURE/SEL

- Reduced suspensions by 70%
- Full-time social worker, counselor, nurse and opportunity gap specialist positions
- Partnership with Chris 180 provides 2 full-time licensed family therapists and 1 behavioral therapist in school

Thomasville Heights Partnerships





Price Middle

Price Updates

Partnership with IBM
EXCITE and IGNITE program

Students launched several
entrepreneurship ventures
through Business in a Box



Huge return in investments
from Positive Behavior
Supports. Using Social
Emotional Learning for
students and parent events
to develop common
language and focus



Trained parents on literacy
strategies from our units of
study

Participated in a British News
Program leading up to the
presidential election last year



Price Partnerships



**FELLOWSHIP OF
CHRISTIAN
ATHLETES**





Sylvan Hills Middle

Sylvan Hills Updates



ACADEMICS

- **Are You Sylvan Ready?** Students are becoming more equipped for college and career as they meet Sylvan's expectations of being Respectful, Punctual, Presentable and Engaged.
- Focus on Literacy and Math instruction through high quality core instruction with double – and sometimes – triple dosage.
- Extended learning opportunities through After-School All-Stars tutorial sessions
- Daily offerings of dance, world languages, arts and business education
- Enrichment opportunities: Future Business Leaders of America, Girl Scouts and JROTC (beginning next year)

Sylvan Hills – as part of getting students ready for college and career – has boosted the quantity and quality of off-site learning experiences with visits to the World of Coke, the Junior Achievement Biztown, Kennedy Space Center, V103 and more!

Parent involvement at Sylvan Hills Middle School has soared by more than 40 percent this year.

Sylvan Hills' efforts to get students to schools has led to attendance increases; 95 percent of students show up for school every day!

Sylvan Hills strives to improve the culture and climate of the middle school experience. The school has already seen success with declines in overall suspensions.

Sylvan Hills Partnerships



Rice Memorial Presbyterian Church





Carver High

Carver High Updates



ACADEMICS

- Early indications show expected rise in Graduation Rate
- APS Big Deal Award: Failure Rate Reduction for Fall 2016 (68% reduction in failures)
- APS Leading Academically Award
- Implemented Writing Across the Curriculum through R.A.C.E.S. writing strategy model to increase constructive response items on Georgia Milestones



CULTURE/CLIMATE

- School Climate Award: Greatest Increase in Positive Responses on Student Survey in District
- Decrease in student month-to-month suspension rate
- Fine Arts Department's Concert: "A Winter's Tale"
- AV Technology Program: Students recorded and produced 3 original videos



SPORTS

- Boys' Basketball team: Regional Champions and ELITE EIGHT in state tournament
- Football team placed second in region and advanced to first round of state playoffs
- Two football players received full scholarships to attend Morehouse College and Hutchison Community College.

Carver High Partnerships



Emory Health Care Academy: Students participate in hands-on activities geared towards health sciences. Healthcare professionals and current students in Emory's nursing, medical and physician assistant programs, as well as students from the Philadelphia School of Osteopathic Medicine, participate in weekly visits to Carver High School.



Emory Pipeline Collaborative (EPIC): Comprehensive three-year continuum (10th-12th grade) of learning, mentoring, college preparation and health profession exposure activities through Emory University.



Reach One Each One Program at Grady Hospital: Students completed rounds in Grady Hospital's ER, OB/GYN, surgery, sports rehab and other departments beginning in September 2016.



Health Occupations Students of America (HOSA): National Career and Technical student organization that prepares students to enter the healthcare field. 100% of Carver High School students passed the State qualifying examination.



Carver Early College

Carver Early College Updates

Opened in 2005 as Georgia's first Early College Program, enabling students to earn college credit while completing high school.

Carver Early College routinely posts GA Milestone scores that lead the performance within Atlanta Public Schools and the state of Georgia.

Nearly every Early College student graduates; Cohort 2016 posted 98.7% graduation rate – tops in Atlanta Public Schools

Designated 'Model for Accountability' by the Governor's Board of Schools and Education, a distinction only earned by 13 other schools in the state of Georgia.

Recognized as Top 4 high school in Metro Atlanta based on CCRPI scores

Named by state as FY17 Reward School for ranking among five percent of state's Title I schools with absolute highest performance, over three years, for "all students" group on statewide assessments.

Carver Early College Partnerships



Alumni Associations for both Carver High School and the former Price High School.

Agenda

Welcome & Introductions

Current State of District & Carver Cluster

Updates on Schools within the Cluster

Updates on Partners within the Cluster

Question & Answer

Purpose Built Schools Atlanta



PURPOSE
BUILT
SCHOOLS
ATLANTA

Innovating schools. Inspiring minds.



Opened Charles R. Drew as a K-5 in August 2000 as Atlanta's first charter school. Now K-12, school will graduate its first senior class in May.



Began operating Thomasville Heights ES as a partner school with Atlanta Public Schools in July 2016



Prepared to operate Slater Elementary in July 2017 with Lenise Bostic as new principal



Prepared to operate Price Middle School in July 2017 with Luqman Abdur-Rahman as principal



Slated to manage Carver High School beginning with the 2018-2019 school year





PURPOSE
BUILT
SCHOOLS
ATLANTA

Innovating schools. Inspiring minds.

Purpose Built Instructional Model

(as demonstrated at Charles R. Drew)

Extended Day

STEAM curriculum with 2
enrichment classes per day

Individualized instruction in
literacy and math

Early learning focus

Additional instructors in each
classroom

After-school programs



Outreach to Teachers, Families, Community



PURPOSE
BUILT
SCHOOLS
ATLANTA

Innovating schools. Inspiring minds.



GO Team members on interview teams for principals

Tours of Drew Charter and Thomasville Heights ES for all staff

Principal meetings with PTAs in February and March

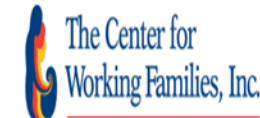
Family STEAM nights in late April

Community gatherings over summer

Community support to build stable, healthy neighborhood



- Benefits screening
- Parenting support and guidance
- Food support
- Mental health support and counseling



- Securing needed repairs
- Testing health environment
- Fighting evictions



- Free legal consultation
- Support cleaning your record (expungement)
- Referral to free tax prep services



Text or call
PBSA's
**community
hotline** for
more info

**(470)
485-2575**

Kindezi at Gideons: Our Strategy

- Emphasis on small classes of 6-8 students allows teachers to:
 - Build strong relationships with students and families
 - Quickly identify gaps in student learning
 - Figure out how students learn best, and provide individualized support
- Recruiting, hiring, and developing teachers with turnaround experience or a track record of improving student performance
- Student culture team specifically focused on supporting student behavior.



Kindezi at Gideons: Our Results

Kindezi Old Fourth Ward started as a turnaround of Intown Academy.

Median Student Growth Percentiles (of former Intown Academy students)

	Math	ELA
2016 Kindezi	91	59
2016 Georgia	50	50
2015 Intown	19	43



Rensselaerville in APS:

Providing Job-Embedded Support to Principals

Schools Served

Mays Cluster:

- Adamsville Primary
- Miles Intermediate
- Peyton Forest ES
- Young MS

Therrell Cluster:

- Continental Colony
- Kimberly

Carver Cluster:

- Finch ES
- Perkerson ES
- Sylvan Hills MS
- Carver HS

- Each school has an assigned turnaround specialist
- An immediate focus was on leaders' increased time in classrooms and analysis of data at the classroom level
- Focus is on core behavior changes and leadership development as a means of building durability of change at the building level
- Principals completed mid-year training focused on new thinking and action



Rensselaerville in APS

The Rensselaerville Institute has intentionally integrated its work with APS initiatives to ensure seamless support for principals.

Support for Principals

- Instructional Practices & Units of Study
- SEL
- Data use
- Walk-throughs
- Focus on Building Literacy



Successes and Learnings:

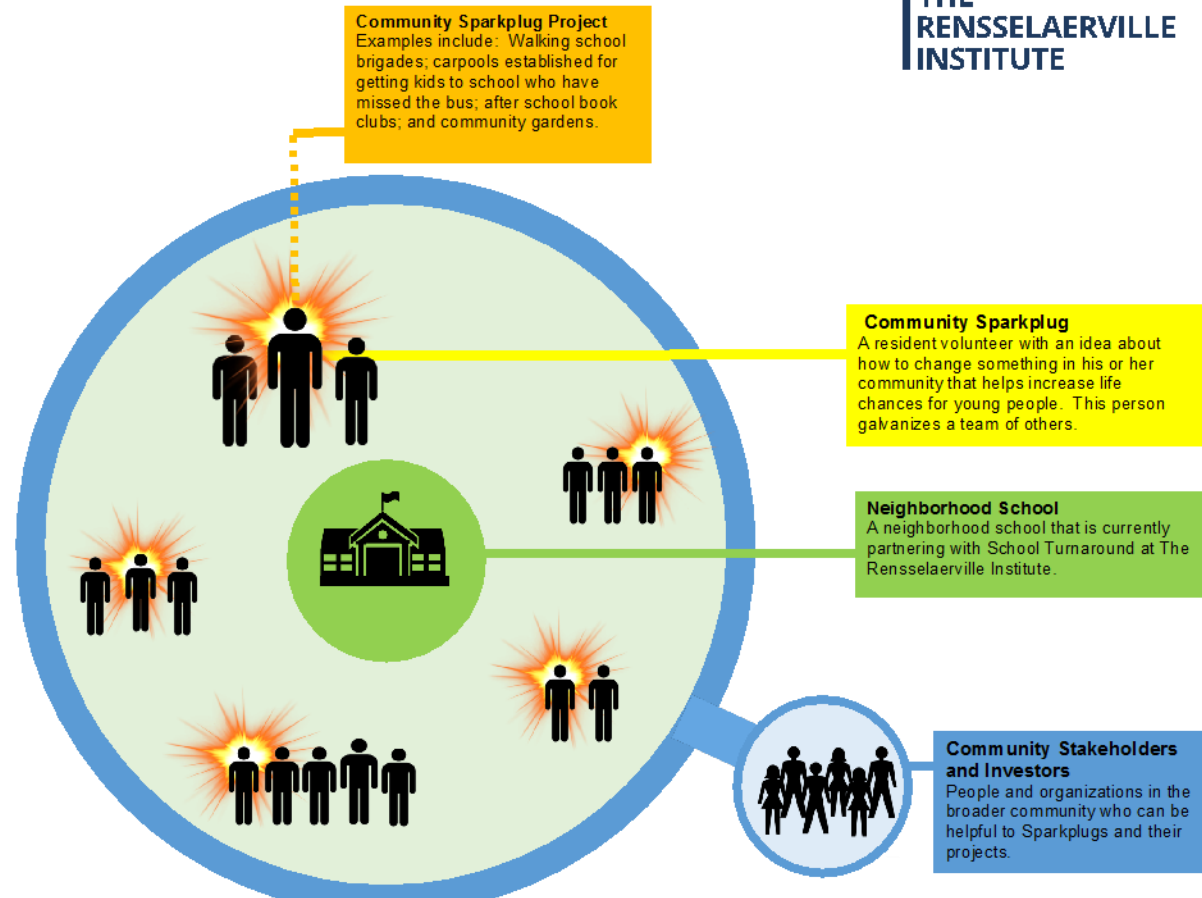
- Principals appreciate the investment in them and need the support
- Principals are embracing this support and are willing to work the strategies
- Principals have developed solid connections with Turnaround Specialists who work alongside them
- Principals have welcomed collaboration

Rensselaerville in APS:

Community Sparkplug Projects Kicked Off in Mays Cluster in Jan. 2017

What is a Community Sparkplug Project?

- Results-focused efforts to improve life chances for young people
- Driven by local folks – not outsiders or organizations
- Implemented in or around a neighborhood school
- Implemented in a time-compressed way over 6 months
- Moving quickly from talk to action
- Makes best use of scarce resources



Rensselaerville in APS:

Community Sparkplug Projects Start Off with a Community Idea

School(s)	Project Name	Project Idea	Intended Outcome
Adamsville	One-on-One Reading	Designed to help boys develop a love of reading; includes individual reading tutorials, new books and incentives to encourage reading at-home	<ul style="list-style-type: none"> ➤ Increase number of books children read with adults ➤ Improve children's towards reading improve and decrease behavior issues
Adamsville	Little Book Houses	Design, creation, and installation of book houses in apartment complexes where students live	<ul style="list-style-type: none"> ➤ Increase children's carpentry skills and math skills that are a part of them ➤ Increase access for community to quality books
Adamsville	Tennis for Life	Program will teach children tennis afterschool, using underutilized courts in the community	<ul style="list-style-type: none"> ➤ Increase children's physical activity and academic performance, ➤ Increase tennis knowledge and skills
Peyton or Miles	Straight As	(Academics, Athletics, Appearance, Attitude) program taking place at local YMCA	<ul style="list-style-type: none"> ➤ Increase children's physical activity and academic performance ➤ Improve appearance and overall attitude
Miles	Broadway Theatre training	Theater production training for students including performance coaching, costume and set design, and production. Students will put on production for parents and the community	<ul style="list-style-type: none"> ➤ Increase self-esteem and children's theater and theater production skills ➤ Develop better leadership and presentation skills ➤ Decrease behavioral issues
Peyton	Kid-led T-shirt company	Will teach students the basics of starting a T-shirt business	<ul style="list-style-type: none"> ➤ Increase children's entrepreneurship ➤ improve math and reading skills ➤ Children gain economic benefits from selling their creations
All	Aquaponics	Aquaponics program teaches students science of growing food	<ul style="list-style-type: none"> ➤ Increase children's knowledge of science and growing healthy food for themselves



Agenda

Welcome & Introductions

Current State of District & Carver Cluster

Updates on Schools within the Cluster

Updates on Partners within the Cluster

Question & Answer

Upcoming Carver Meetings

- Atlanta Public Schools:
 - Carver Cluster Data Presentation: 6 p.m., Tuesday, March 28, in Carver Early College library
- Purpose Built Schools:
 - Family STEAM Night at Slater and Price in late April/early May
 - Other community meetings planned for over summer prior to school opening
- Kindezi Schools:
 - Parent meeting: 6 p.m., Tuesday, March 28, at Gideons ES

Question & Answer

